

Halo.



bd
Bryant Dental.

Humanity
augmented.



Contents.

- 04. The BD story.
- 06. Intended use.
- 08. Safety instructions.
- 10. Components.
- 12. Charging and before use.
- 13. How to use.
- 14. Cleaning and maintenance.
- 15. Disposal.
- 16. Servicing and troubleshooting.
- 17. Get in touch.
- 18. Warranty.
- 19. Technical specifications.



Why we exist, and what we do.



Our Mission.

We exist because we know great clinicians change lives.

We believe that the optics we create for clinicians should feel like the first time they wear a pair of prescription glasses - as though it's the first time they've seen the world as it really is.

Our mission is to bring the most human-centric technology to every clinician on the planet. Technology that is so lightweight, so biomimetic and so clear that it feels as though human sight has been amplified not just magnified. Loupes that work to go beyond the limits of human vision.

Our Vision.

Imagine a world where technology is so intuitive, so intelligent, so seamlessly woven into the fabric of healthcare, that it feels like clinicians are magicians. Man, elevated by machine, to new heights.

We're crafting a system that's not just intelligent in a computational sense but in a profoundly human sense. A system so seamless that you forget where the technology ends and where you begin. This is more than augmented reality; it's augmented humanity.

Intended use.

The Halo® Wired Headlight is an illumination device attached to spectacles that is intended to illuminate oral structures and operating areas.

This device is designed to be used by qualified dental professionals, including, but not limited to, dentists and dental hygienists, as well as medical doctors and/or professionals. Halo® must be used with the bracket, power supply, battery and light provided elements and intruders. Please see the instructions shown on the right.



Follow instructions for use.



Do not look directly into the light output.



Do not bring the device within 200mm of the patient.



Ensure that filter is fully tightened before use.



Do not use with silicone allergy.



Angular adjustments must only be made when the HALO is at room temperature to avoid potential burn.



Do not touch the light when on, it can become very hot and cause burns and other injuries.



Do not use if you have a pacemaker.

Two smartphones are shown, one in the foreground and one slightly behind it. Both screens display a blue-to-purple gradient background. The foreground phone shows the word 'Club.' in white, lowercase letters. The background phone shows the letters 'bd' in white, lowercase letters.

**Thank you for
choosing Bryant Dental.**

We believe in creating excellent products for extraordinary dentists, and we are always proud to gain a new member of our community of passionate clinicians. Join the BD club to see what other members have done with Halo®.

Safety instructions.

- Use supplied charger, using another charger will damage the battery and invalidate the warranty.
- Do not immerse any of the Halo® system in water.
- If any problems occur with the unit, return to Bryant Dental® for repair. Attempting to repair yourself will void the warranty.
- Do not change or modify any of the existing components without authorisation from Bryant Dental®.
- Do not leave the light on inside a pocket, as it will cause the unit to overheat.
- Do not leave the battery or the headlight on exposed skin, as it can cause burns.
- Do not charge unattended or leave in environments exceeding 40°C.
- If battery behaves abnormally, immediately contact Bryant Dental®.
- Take care not to touch the LED during use, as this can cause a burn injury.
- Do not shine in eyes.
- Do not bring battery or light within 200mm of the patient.
- Do not use if you have a pacemaker.
- Do not use with silicone allergy.
- Ensure filter is fully tightened before use.
- Use of loose components carries with it a serious risk of choking.





Components.

- LED with integrated wire
- Dichroic composite filter
- Battery control unit
- Power adapter (country specific)
- Headlight bracket (frame specific)
- Accessory bag
- Halo® screwdriver
- Head strap
- Instruction manual

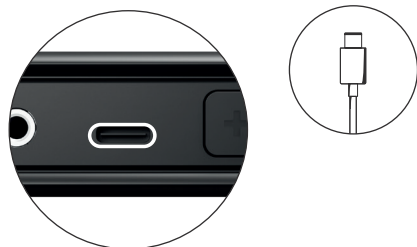




Charging and before use.

1 Getting started

Plug the USB C charging cable into the rectangular opening at the top of the Halo® battery pack.



3 Charging status

The LCD display will flash on to indicate that the device is charging.



2 Switch ON

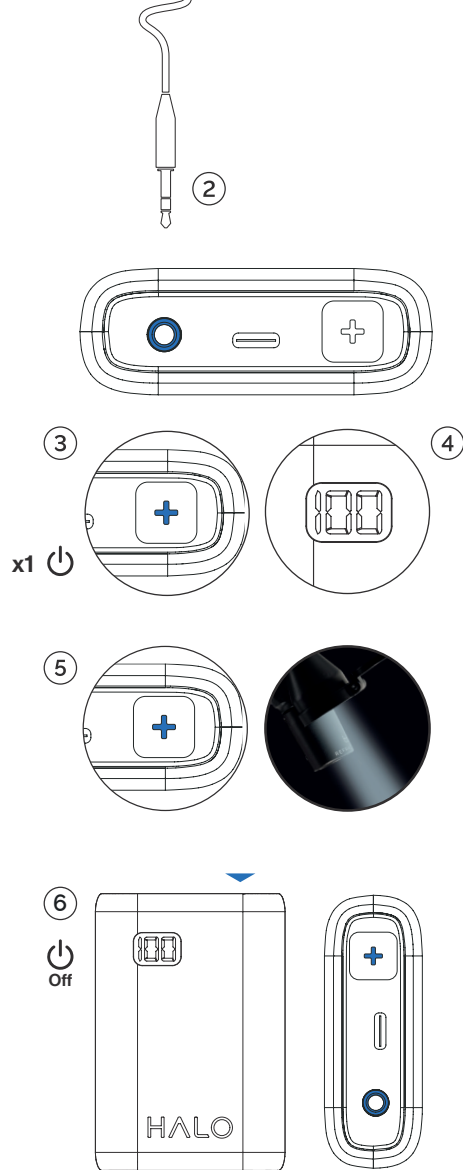
Ensure that the power adapter is plugged into the wall plug and switched on. 188 will flash on the display to confirm that it is entering a charging cycle.

4 Charging progress

A full charge from 0% to 100% takes approximately 2 hours.

How to use.

1. Unpack Halo®. Carefully peel off the plastic film covering LCD display.
2. Plug the headlight jack into the circular opening on the top of the Halo® battery pack.
3. To switch ON, ensure the light is not pointed at anyone and press the button with the + icon once.
4. The LCD display will also switch on at this point to indicate that the unit is on, indicating how much battery is remaining.
5. To adjust the brightness, press the + button once, there are 4 brightness modes accessible in this way.
6. To switch off, press the + button down and hold until the light turns off. The LCD display may remain on for a few minutes after the unit is switched off.



Cleaning and maintenance instructions.



Do not run under water.



Do not spray the device.



Do not submerge in any liquid or ultrasonic cleaner.



Do not pull on exposed cables during cleaning.



Do not use autoclave or chemiclave.



Do not use glutaraldehyde or iodophor.



Do not use a cleaner with alcohol concentration greater than 70%.



Disposal.



When you plan to dispose of the device, please return to Bryant Dental® for recycling. The European Union Waste Electrical and Electronic Equipment (WEEE) Directive forbids the disposal of waste electrical and electronic equipment as unsorted municipal waste, requiring that it be collected and recycled or disposed of separately.

Hazardous substances are present in electrical and electronic equipment and present potential risk to human health and the environment if disposed of in municipal and fills, which are not designed to prevent migration of substances into the soil and groundwater.

Halo® battery packs contain Lithium Ion cells. Return to Bryant Medical, recycle or dispose of the batteries according to national, state, and local regulations.

Compliant with RoHS directive 2011/65/EU



Servicing and troubleshooting.

- Lithium Ion batteries are considered expendable and will last 300 charge/discharge cycles before gradually losing capacity. New Halo® battery packs can be ordered directly from Bryant Dental® or your local distributor.
- Ensure the Halo® Wired Headlight is regularly cleaned and disinfected.
- Enquire with Bryant Dental® about a service plan for the highest level of support.
- The batteries should be inspected every half year for any signs of damage or malfunction.

Battery is not charging

Turn on Halo® and check that the light turns on.

If the light is on, run at minimum brightness for 10 mins and verify that the remaining battery percentage is showing during this time.

Turn off the Halo® light and reconnect the charger. Verify the Halo® battery pack percentage is now increasing after 10mins.

If this doesn't solve the issue, please contact Bryant Dental®.

LCD display not switching on

Please cease use immediately and contact Bryant Dental®.

Light comes on intermittently

Ensure batteries are fully charged and headlight jack is fully inserted.

Light is flickering

Ensure batteries are fully charged and headlight jack is fully inserted.

There is no light output

Ensure Halo® battery pack has charge and headlight jack is fully inserted.

Battery is behaving abnormally

If the battery exhibits abnormal function please cease use immediately and contact Bryant Dental®. Abnormal function could include, though is not limited to, overheating, expanding or changing shape.

Get in touch.

If you have any questions or concerns, please don't hesitate to get in touch.



Scan to connect.

Our 24/7 support team is always on hand if you need anything. In the first instance, please contact your product specialist, or use the direct whatsapp link above to connect with our customer support team.

Our office team is also available to answer any questions you may have.

UK office contact number:

+44 (0)1932 320064

+44 (0)7990 113723

UK office address:

The Barns, Hilltop Farm, Lyne Lane
Chertsey KT16 0AW, United Kingdom

Australian office contact number:

+61 (02) 72089592

Australian Office Address:

Suite 12, 13U/175 Lower Gibbes
St Roseville NSW 2069, Australia

Warranty.

Bryant Dental® will repair any Halo® issue arising from a manufacturing defect for a period of two years, without charge. The liability will not exceed the amount you originally paid for the product. The warranty does not cover defects arising from negligence, product modification, unauthorised repairs, accidental damage, theft, loss or acts of God.

SN See device

LOT See device

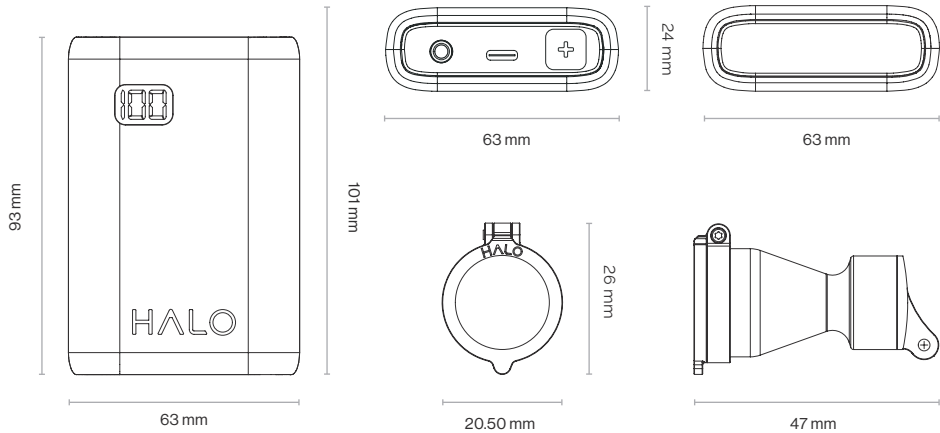
REF See device

Technical specifications.

Finish



Dimensions



In the box

- LED with integrated wire
- Dichroic composite filter
- Battery control unit
- Power adapter (country specific)
- Headlight bracket (frame specific)
- Accessory bag
- Halo® screwdriver
- Head strap
- Instruction manual

Technical:

Model	HL-BD07
SKU	5060678490423
Spot size	10cm diameter @ 40cm working distance
Spot size	7cm diameter @ 40cm working distance
Beam colour temperature	5700K
Beam intensity	25 – 70 lumens
Battery weight	c200g
LED weight (inc. cable + connector)	c36g
Adverse reactions	None known
Operating power	DC3.7V --- 450mAh @ 37Wh
Charger input	AC100 - 240 volts, 50-60 Hz, max. 0.8A
Charger output	5.0V 2.4A 12W
Operating time (constant output)	17 – 60 hours
Battery charge cycle count	>700
LED life cycle	>50,000 hours

Only use supplied charging adapter

Storage and shipping conditions:

Storage temperature	0°C - 40°C
Relative humidity	30 - 75%

Environmental operating conditions:

Operating temperature	0°- 30°C
Charging temperature	10° - 30°C
Relative humidity	30 - 75%
Atmospheric pressure	70.0 kPa to 106.0 kPa

Parts list: of full system:

Part name	Part code	Supplier
LED with integrated wire	HA7	Bryant Medical
Dichroic composite filter	DC9	Bryant Medical
Battery control unit	PB14	Bryant Medical
Power adapter (country specific)	UE24WCP1	Bryant Medical
Headlight bracket (frame specific)	HB0023	Bryant Medical
Accessory bag	WM45	Bryant Medical
Screwdriver	HSC3	Bryant Medical
Clothing clip	HCC8	Bryant Medical
Spare O-ring pack	OR1	Bryant Medical
Head strap	HHS12	Bryant Medical
Pen	P16	Bryant Medical
Instruction manual	IM661	Bryant Medical

Applicable standards:

EN 60601-1:2006

EN 60601-1-2:2015

IEC 60601-1-6:2010/AMD1:2013

IEC 60601-1-2:2014

ICES-003 (issue 6)

IEC 62471:2006 (risk group 2)

Meets requirements of the EU-MDR

Contraindications:

Do not use the Magstrap if you have a silicone allergy

Do not use the Magstrap if you use a pacemaker



Follow instructions for use



Operating temperature limit



This device is not sterile



Do not dispose



Do not use if package is damaged



Possible hazardous optical radiation emitted from this product. Do not stare at the operating lamp. May be harmful to your eyes – Risk group 2.



Bryant Medical Ltd,
The Barns, Hilltop Farm, Lyne Lane, Chertsey, KT16 0AW, U.K



Meets requirements of EU-MDR



Ensure filter is fully tightened using enclosed screwdriver



Use of loose components carries with it a serious risk of choking

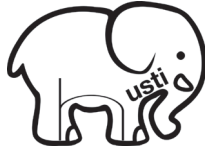


The batteries should be inspected every half year for any signs of damage or malfunction



The device should not be connected to mains power supply during use





Bryant Dental x Husti.

Husti is a charity which empowers children in rural India, using education and offering them tools to improve their lives. Bryant Dental is proud to partner with this cause, which aims to change lives and build communities for underprivileged children.



**You have the power
to change lives.**


Find out more about the work they do here.




Bryant Dental.

Humanity, augmented.

www.bryant.dental

 **UK +44 (0)1932 320064 | AUS +61 (02) 72089592**

 **UK +44 (0)7990 113723**

Bryant Medical, The Barns, Hilltop Farm, Lyne Lane, Chertsey, KT16 0AW, UK
Bryant Medical Ltd UK are registered trademarks in the United Kingdom and Australia.

Registered in England & Wales No. 10396020. Registered in Australia No. 634 752 980

EN1.0/IG/IFU Rev 1.8 2024